



P.O. Box 118  
Lisbon Falls, Maine  
04252  
207-532-5876

VILLAGE AT OCEAN'S EDGE  
ROUTE 102  
SOUTHWEST HARBOR, ME  
UNIT #5

SOUTH ELEVATION

BY: M. Meier	PROJECT # 14020
SCALE: NOT TO SCALE	SHEET #
DATE: JULY 6, 2015	1 of 7



EAST ELEVATION

**MARTIN  
MEIER**  
CUSTOM  
HOME  
DESIGNER

P.O. Box 118  
Lisbon Falls, Maine  
04252  
207-232-3376

VILLAGE AT OCEAN'S EDGE  
ROUTE 102  
SOUTHWEST HARBOR, ME  
UNIT #5

EAST ELEVATION

BY: M. Meier	PROJECT # 14020
SCALE: NOT TO SCALE	SHEET #
DATE: JULY 6, 2015	2 of 7



WEST ELEVATION



P.O. Box 118  
Lisbon Falls, Maine  
04252  
207-232-5376

VILLAGE AT OCEAN'S EDGE  
\*  
ROUTE 102  
SOUTHWEST HARBOR, ME  
UNIT #5

WEST ELEVATION

BY: M. Meier	PROJECT # 14020
SCALE: NOT TO SCALE	SHEET #
DATE: JULY 6, 2015	3 of 7



NORTH ELEVATION

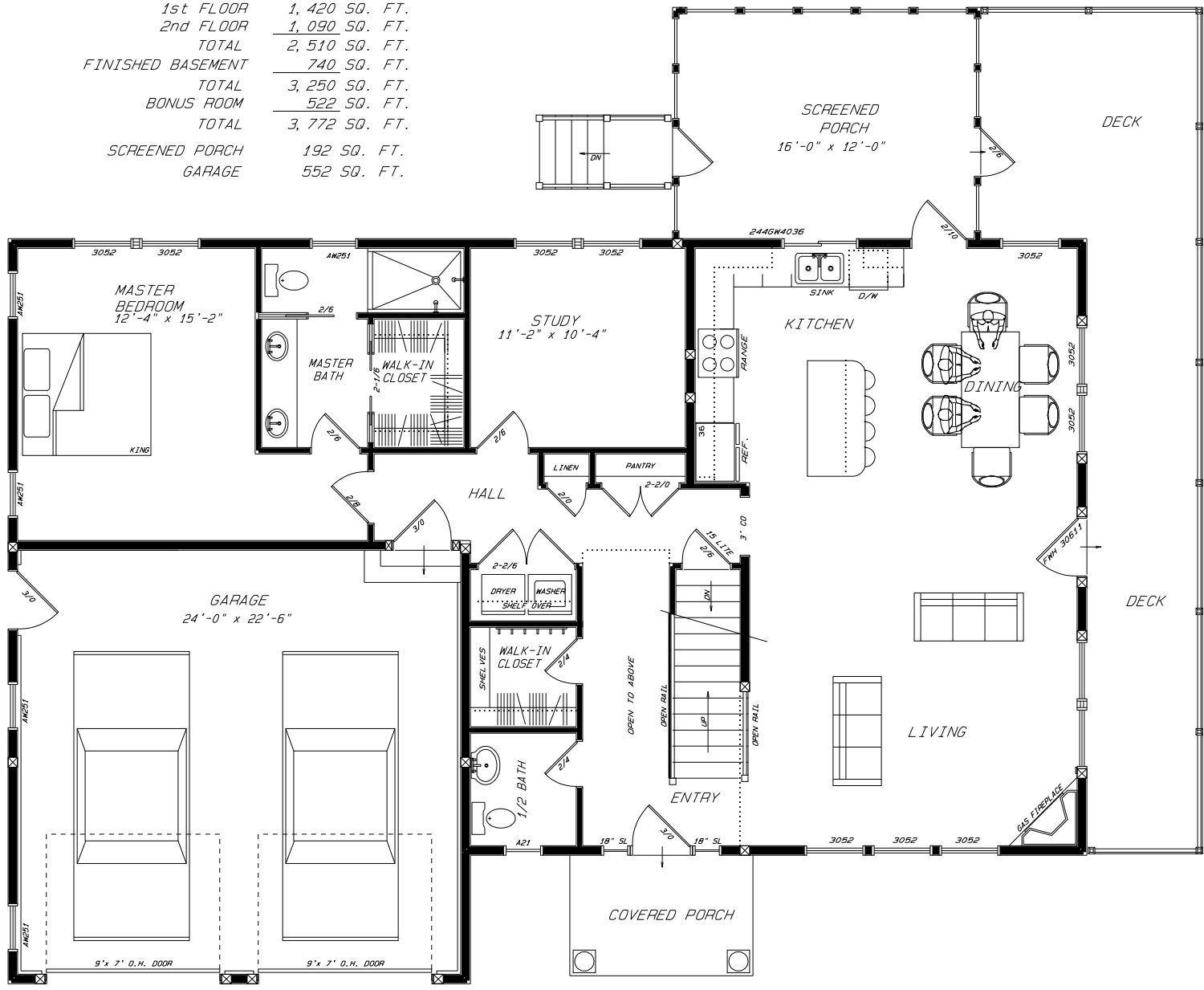


VILLAGE AT OCEAN'S EDGE  
 \*  
 ROUTE 102  
 SOUTHWEST HARBOR, ME  
 UNIT #5  
 NORTH ELEVATION

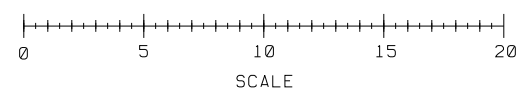
P.O. Box 118  
 Lisbon Falls, Maine  
 04252  
 207-232-5876

BY: M. Meier	PROJECT # 14020
SCALE: NOT TO SCALE	SHEET #
DATE: JULY 6, 2015	4 of 7

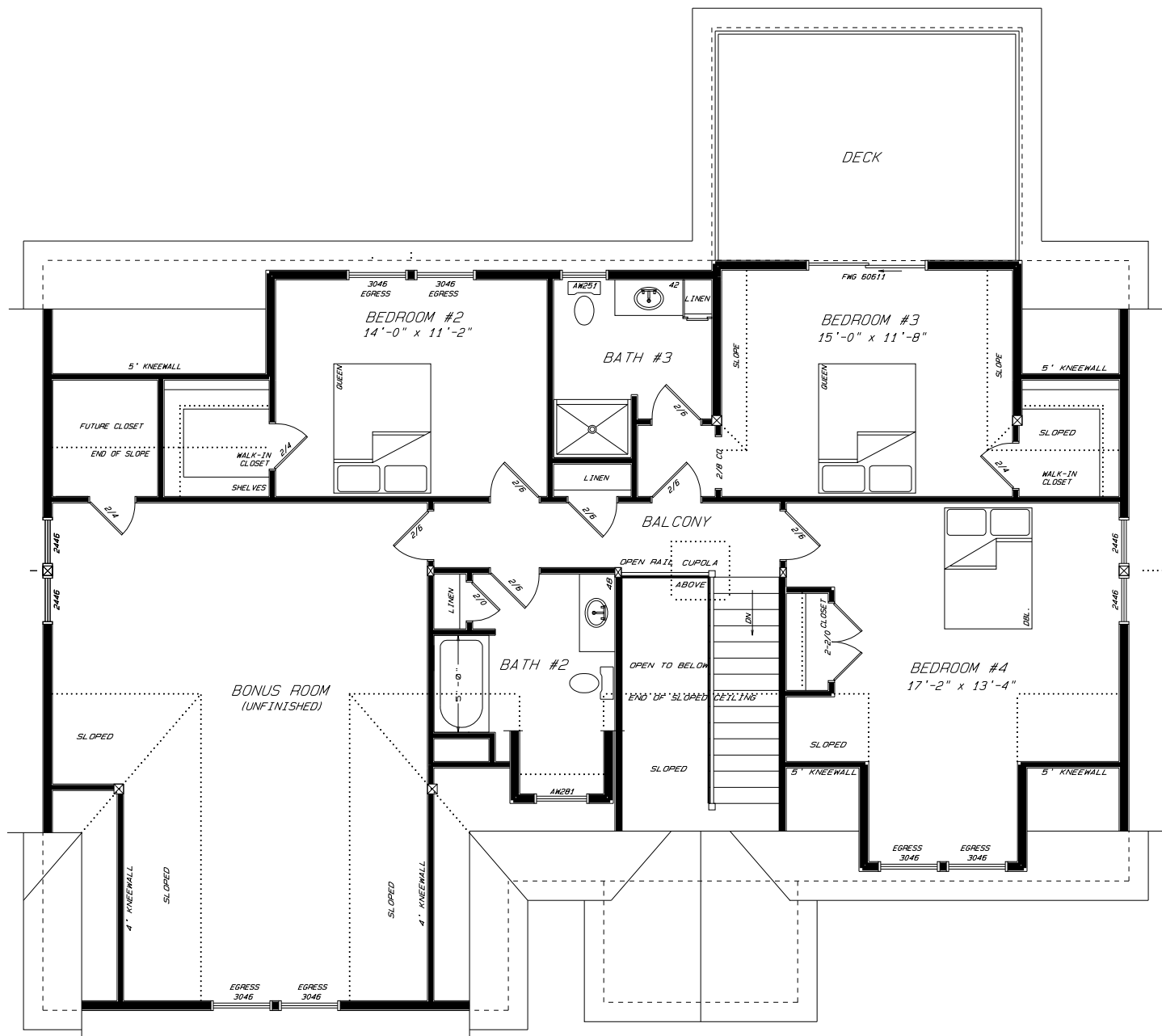
1st FLOOR	1,420 SQ. FT.
2nd FLOOR	1,090 SQ. FT.
TOTAL	2,510 SQ. FT.
FINISHED BASEMENT	740 SQ. FT.
TOTAL	3,250 SQ. FT.
BONUS ROOM	522 SQ. FT.
TOTAL	3,772 SQ. FT.
SCREENED PORCH	192 SQ. FT.
GARAGE	552 SQ. FT.



1ST FLOOR PLAN



	<b>VILLAGE AT OCEAN'S EDGE</b> ROUTE 102 SOUTHWEST HARBOR, ME UNIT #5 1ST FLOOR PLAN		
	P.O. Box 118 Lisbon Falls, Maine 04255 207-292-5378	DT: M. Meier SCALE: 1/8" = 1'-0" DATE: JULY 6, 2015	PROJECT # <b>14020</b> SHEET # <b>5 of 7</b>
	Copyright © 2014 Martin W. Meier		



**2ND FLOOR PLAN**



Copyright © 2014 Martin W. Meier

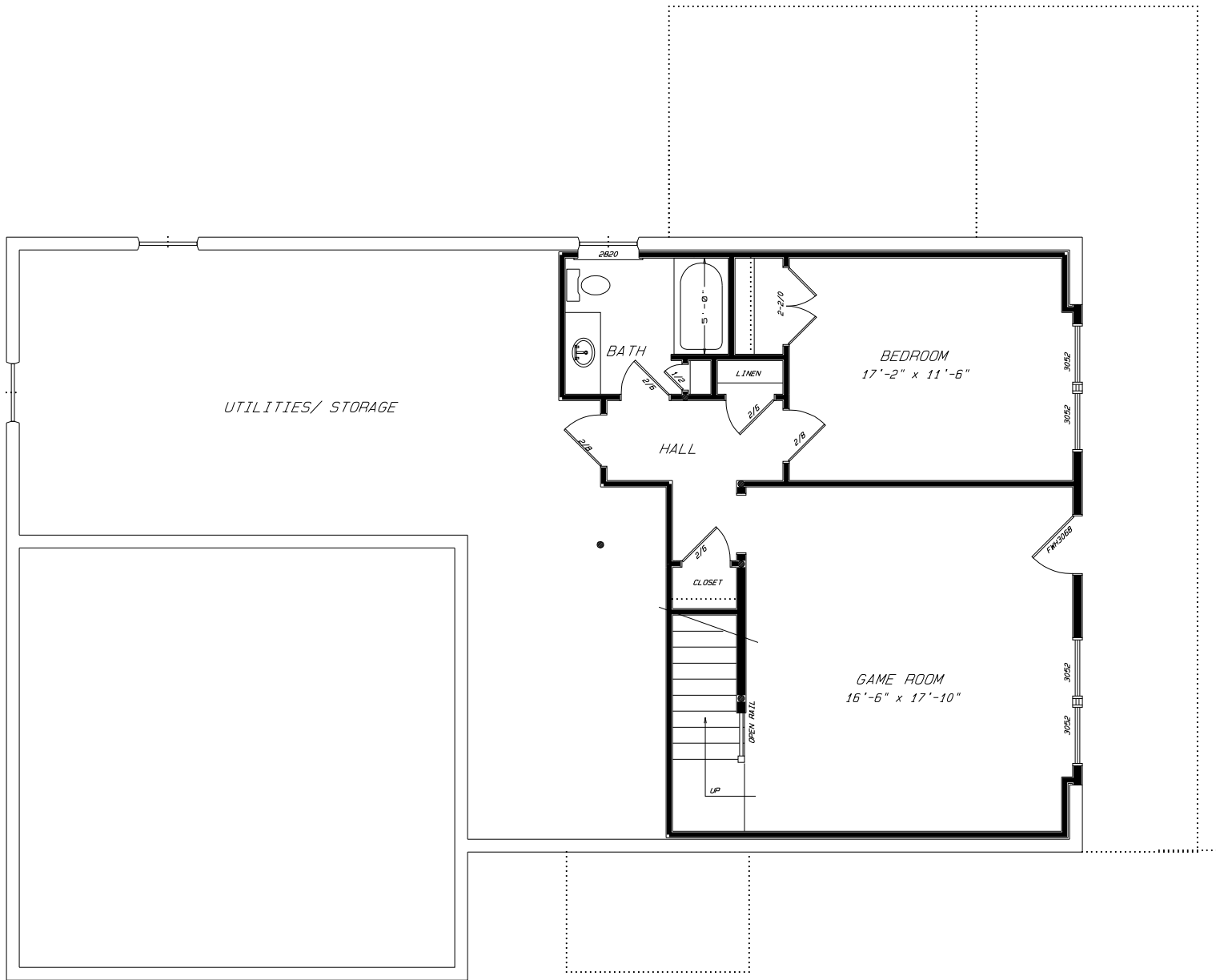


VILLAGE AT OCEAN'S EDGE  
 ROUTE 102  
 SOUTHWEST HARBOR, ME  
 UNIT #5

2ND FLOOR PLAN

P.O. Box 118  
 Lisbon Falls, Maine  
 04255  
 207-292-5378


BY: M. Meier	PROJECT # 14020
SCALE: 1/8" = 1'-0"	SHEET # 6 of 7
DATE: JULY 6, 2015	



LOWER LEVEL PLAN



Copyright © 2014 Martin W. Meier

 CUSTOM HOME DESIGNER	VILLAGE AT OCEAN'S EDGE ROUTE 102 SOUTHWEST HARBOR, ME UNIT #5	
	LOWER LEVEL PLAN	
P.O. Box 118 Lisbon Falls, Maine 04255 207-292-5378	BY: M. Meier SCALE: 1/8" = 1'-0" DATE: JULY 6, 2015	PROJECT # 14020 SHEET # 7 of 7